

The Wave Fountain

Product Name: The Wave 1 and 2 Modfountains

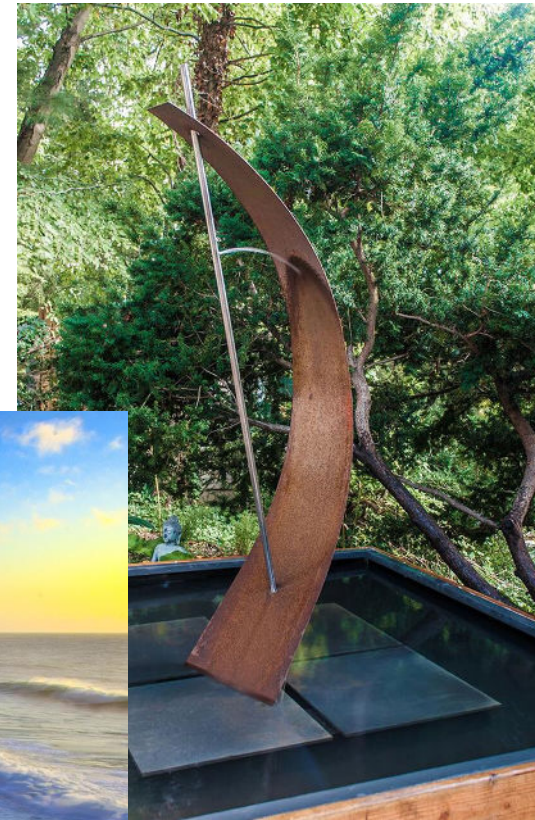
Product Description: The Wave fountains shown in raw Corten steel. Also available in Stainless steel. The Wave water sculpture includes anchor plate.

A Lightweight fountain, small footprint, water tension flow along the interior curve and low splash radius makes the Wave fountain ideal for creating a soothing sound and visual effect in a smaller exterior or interior courtyard. Perfect for roof top and balconies.

Adjustable water flow and spout location to control splash radius and surface water tension.



The Wave 2
(water spout at top of curve)



The Wave 1
(water spout 2/3 from base)

Available in:

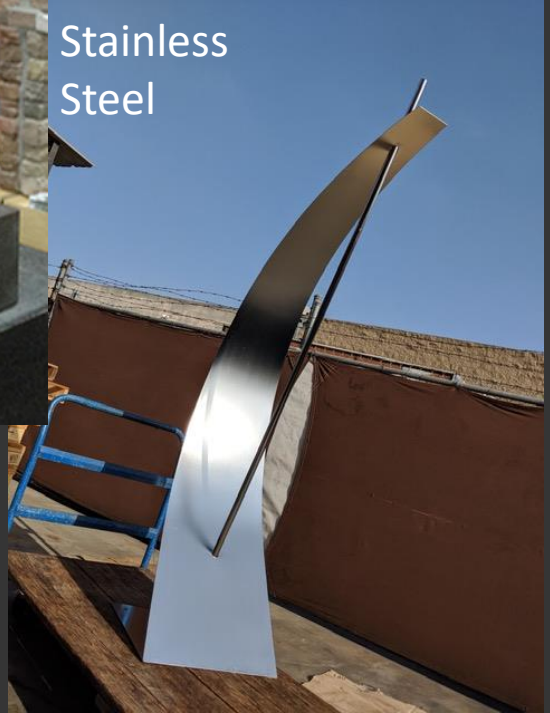
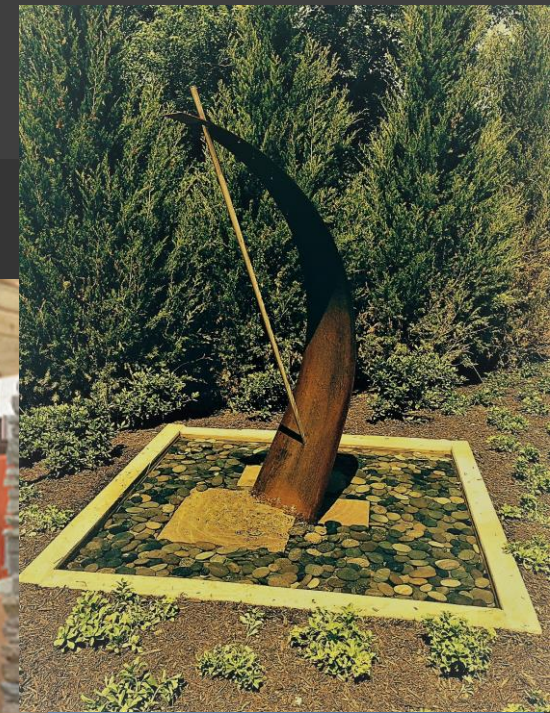
- Corten 3/16" architectural rusting steel
- Stainless steel 304
- Corten or Stainless rectangular tube
- Dimensions: 19"L x 15"W x 90"H
- Weight: 76 lbs.
- Every Fountain can be scaled up or down. Pricing quoted on the website is for dimensions as shown. Contact us for pricing on custom sizes.

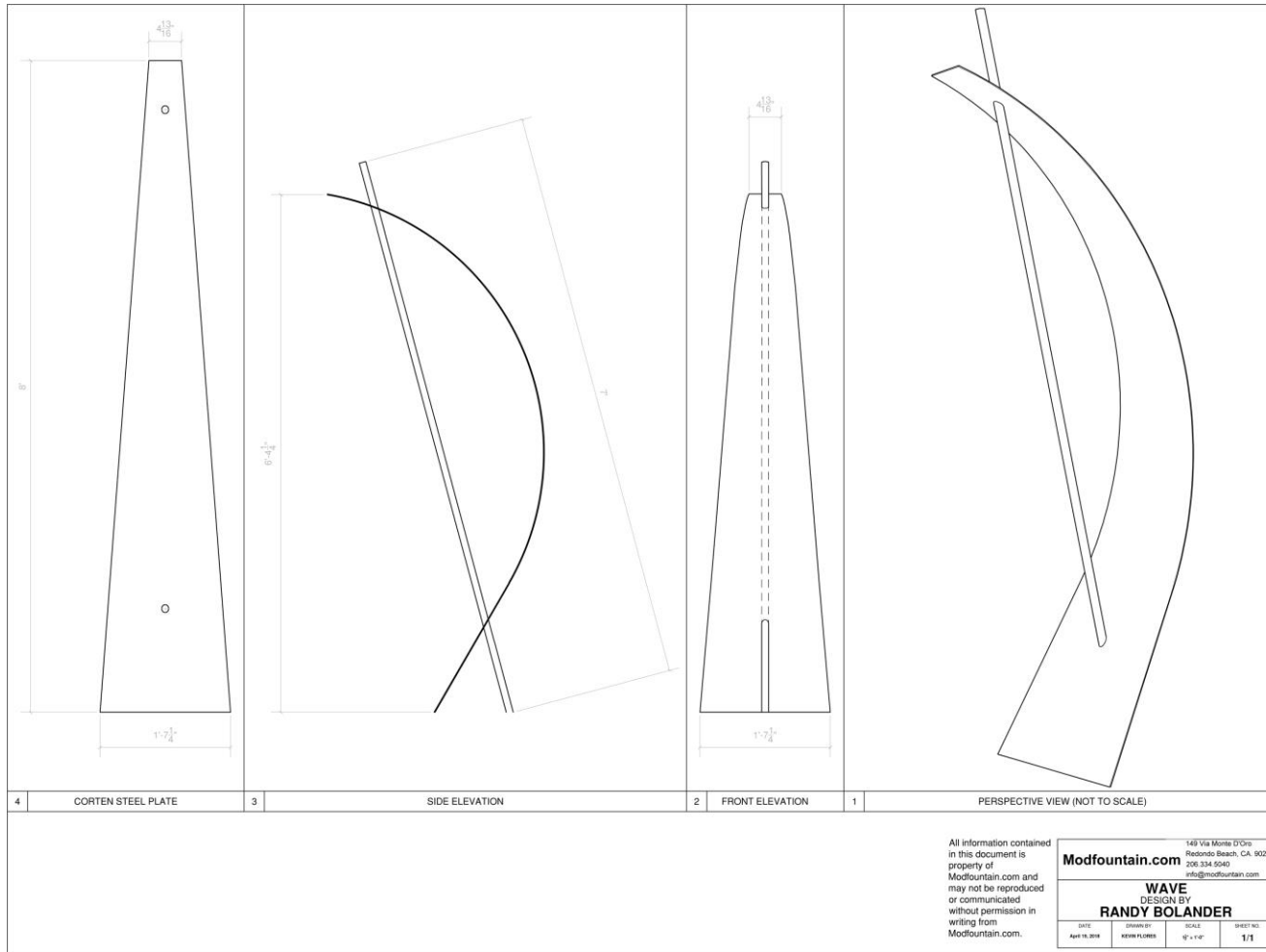
Purchase Includes:

- 2500 gph submersible pump
- 25ft. power cord
- PVC fittings for water intake and pump connections
- Fully assembled and crated Fountain

Does not include:

- Pond or underground reservoir - See Specifications/Installation page for suppliers and installation information
- Pump box platform available at additional charge from MODFOUNTAIN.com
- Shipping - additional cost (call or email for exact cost)

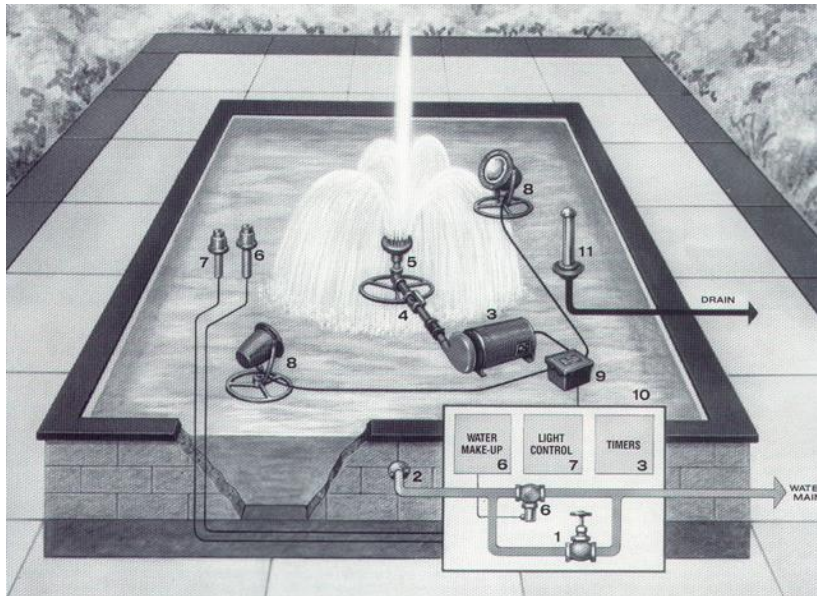




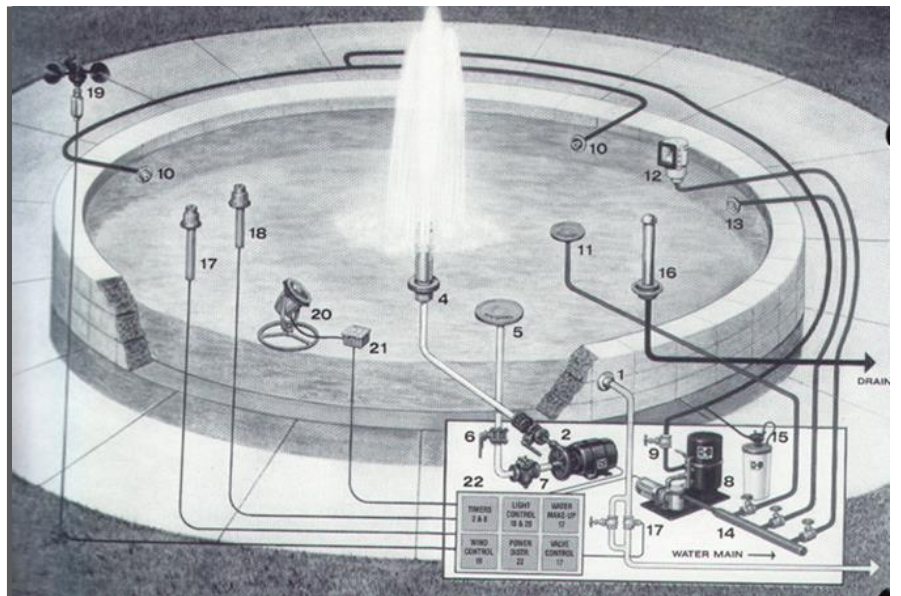
CAD Drawings available

Specifications and Installation information

Examples of above ground concrete pools



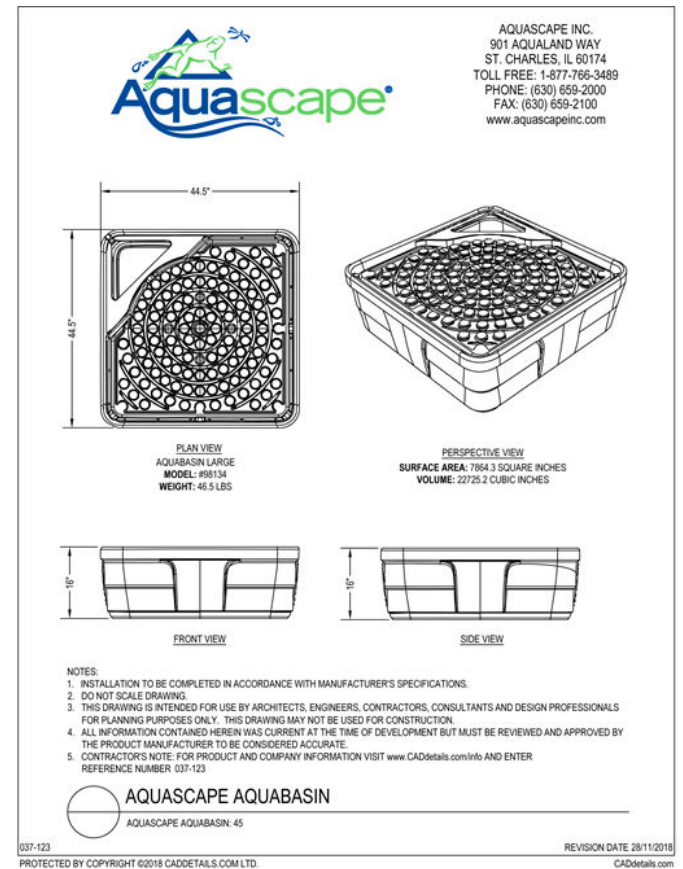
Minimum dimensions for above ground pool 48"x48"x12"



<http://fountaintek.com>

Specifications and Installation information Underground Water Basins

<https://www.aquascapeinc.com/professionals>

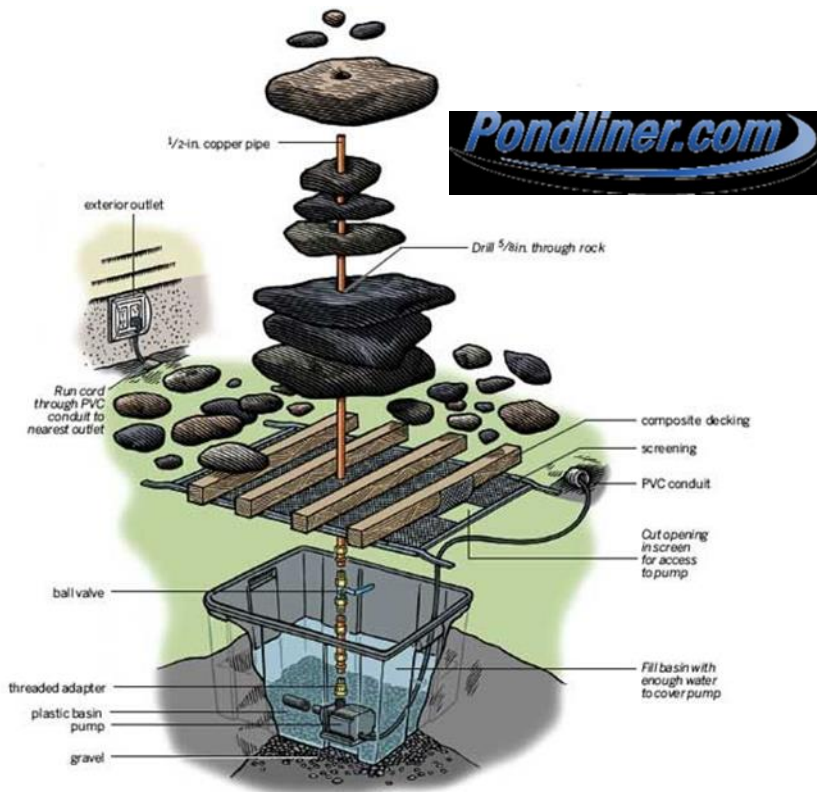


Specifications and Installation information Underground Water Basins and maintenance

<https://www.pondliner.com/pond-construction>

<https://www.pondliner.com/atlantic-ecosolv-liquid-pond-cleaner>

<https://www.atlanticwatergardens.com/products/product/163>



Fountain Maintenance

Corten steel is designed to rust and requires a period of time before the patina sets.

Corten steel being a permeable material can be coated with a commonly used clear sealer to improve water resistance, extending the life of the sculpture.

All stainless steel Modfountains are finished by electro-polishing which creates “good bright finish” 35 times more resistant to corrosion than hand polishing. See Stainless Steel care instructions on MODFOUNTAIN.com

Pond Maintenance

Avoid using salt based water treatment chemicals as it can accelerate rusting. We recommend EcoSolv liquid pond cleaner.

Specifications and Installation information

Pump Box

The MODFOUNTAIN Pump Box is a galvanized or stainless steel platform.

Designed to conceal the submersible pump and can be used as a stand alone platform or bolted into a concrete pool.

Designed to be used with The Wave, Y series and X series Modfountains.

