

Trapezoid C Fountain

Product Description: Trapezoid C fountain shown in Corten steel. Also available in Stainless steel. Water sculpture includes anchor plate.

M Series Fountains are deconstructed trapezoids that can be configured in any combination or variety of sizes to create a unique water element for any environment.

Each M series Trapezoid is striking as a stand alone water sculpture for residential spaces. They can be clustered with other M series fountains or surrounding the original Trapezoid fountains, to create an interactive water sculpture installation perfect for public spaces.

The Trapezoid C Fountain pairs well with the Trapezoid D fountain in the M Series to create a smaller scale installation.



Materials

Available in:

- Corten 3/16" architectural rusting steel
- Stainless steel 304
- Corten or Stainless rectangular tube
- Dimensions: 90in. x 48in. x 78in.
- Weight: 490lbs.
- Shower or spout font
- Every Fountain can be scaled up or down. Pricing quoted on the website is for dimensions as shown. Contact us for pricing on custom sizes.

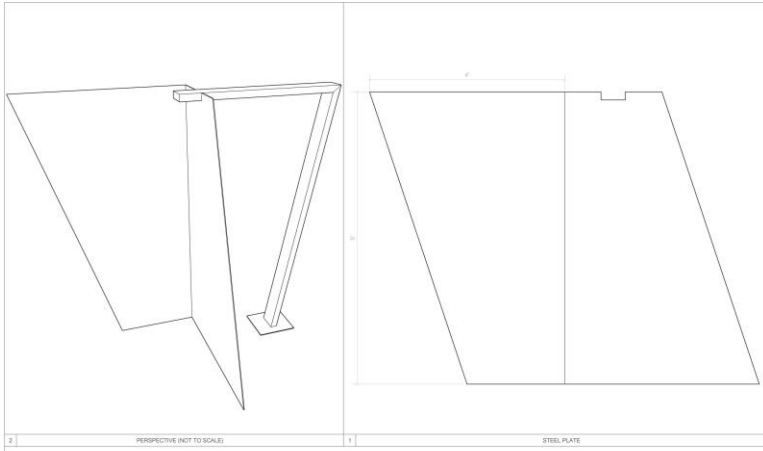
Purchase Includes:

- 2500 gph submersible pump
- 25ft. power cord
- PVC fittings for water intake and pump connections
- Fully assembled and crated Fountain

Does not include:

- Pond or underground reservoir - See Specifications/Installation page for suppliers and installation information
- Pump box platform available at additional charge from MODFOUNTAIN.com
- Shipping - additional cost (call or email for exact cost)





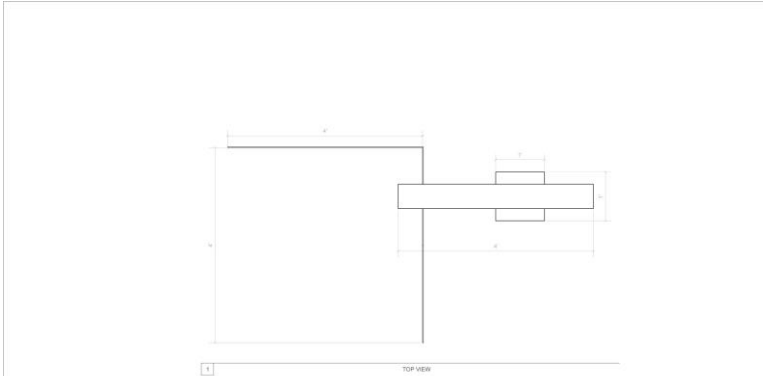
2 PERSPECTIVE (NOT TO SCALE) 1 STEEL PLATE

All information contained in this document is property of Modfountain.com and may not be reproduced or communicated without permission in writing from Modfountain.com.

Modfountain.com 1481 Via Norte Drive, Redwood Beach, CA 90276
 352.334.5140
 info@modfountain.com

TRAPEZOID SERIES C
 DESIGN BY
RANDY BOLANDER

DATE	DESIGNED BY	SCALE	SHEET NO.
04/18/2018	RANDY BOLANDER	1/2" = 1" F	33



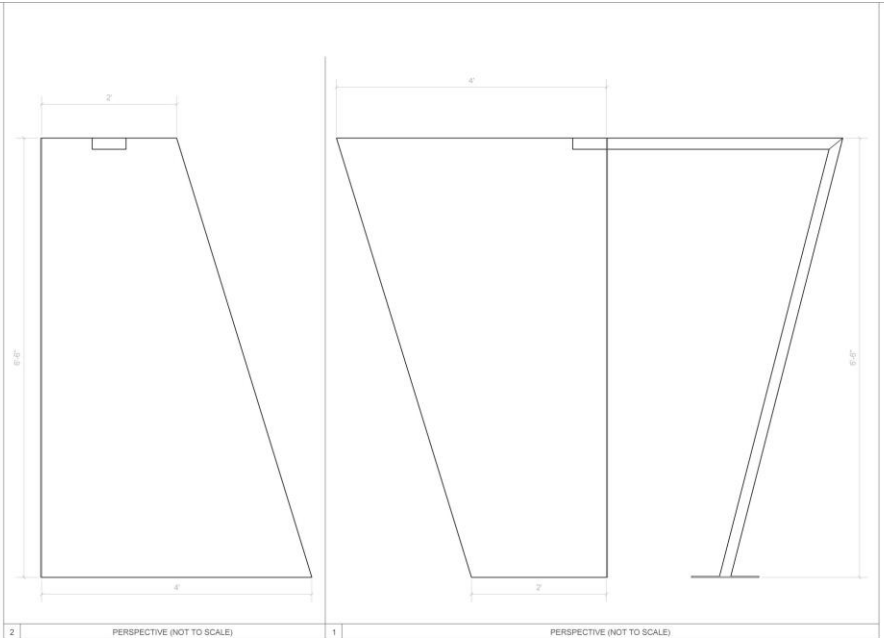
1 TOP VIEW

All information contained in this document is property of Modfountain.com and may not be reproduced or communicated without permission in writing from Modfountain.com.

Modfountain.com 1481 Via Norte Drive, Redwood Beach, CA 90276
 352.334.5140
 info@modfountain.com

TRAPEZOID SERIES C
 DESIGN BY
RANDY BOLANDER

DATE	DESIGNED BY	SCALE	SHEET NO.
04/18/2018	RANDY BOLANDER	1/2" = 1" F	33



2 PERSPECTIVE (NOT TO SCALE) 1 PERSPECTIVE (NOT TO SCALE)

All information contained in this document is property of Modfountain.com and may not be reproduced or communicated without permission in writing from Modfountain.com.

Modfountain.com 1481 Via Norte Drive, Redwood Beach, CA 90276
 352.334.5140
 info@modfountain.com

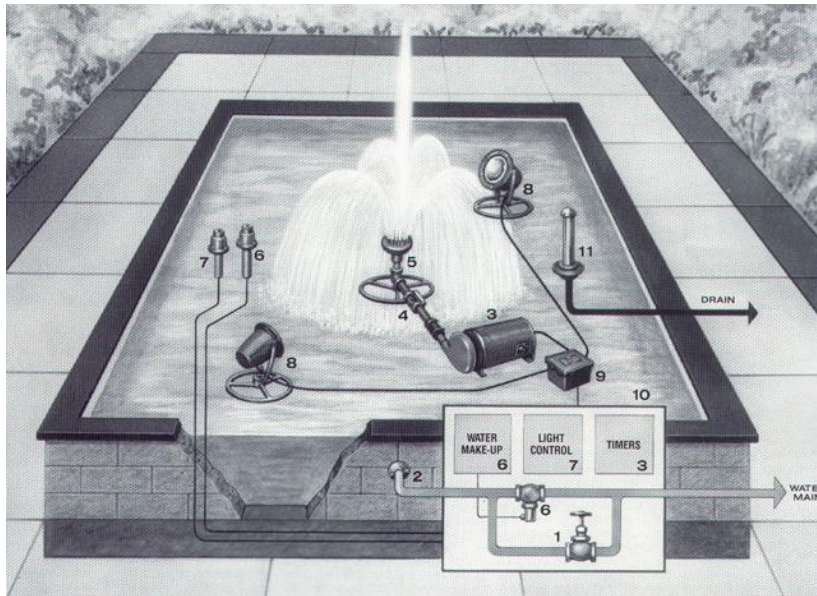
TRAPEZOID SERIES C
 DESIGN BY
RANDY BOLANDER

DATE	DESIGNED BY	SCALE	SHEET NO.
04/18/2018	RANDY BOLANDER	1/2" = 1" F	33

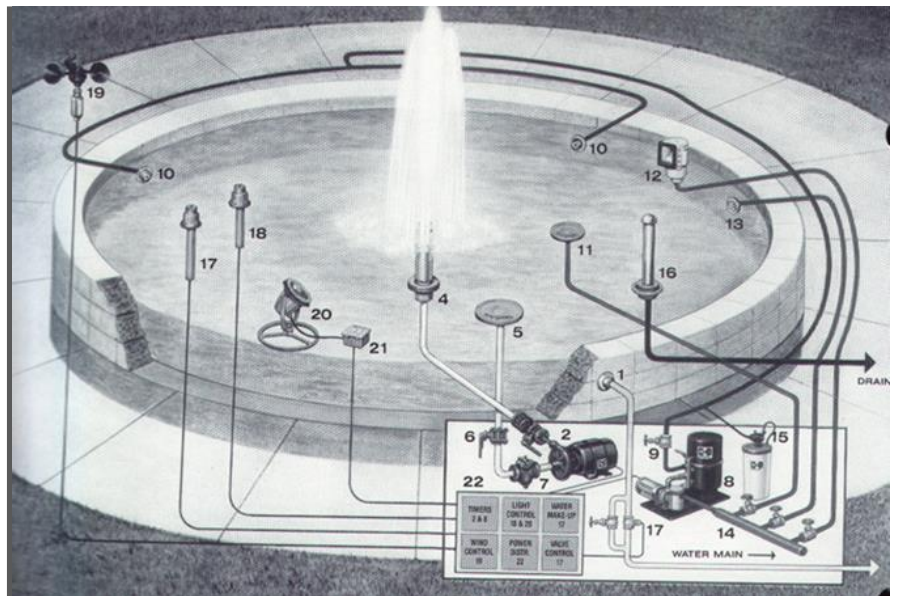
CAD Drawings available

Specifications and Installation information

Examples of above ground concrete pools



Minimum dimensions for above ground pool 8' x 10'



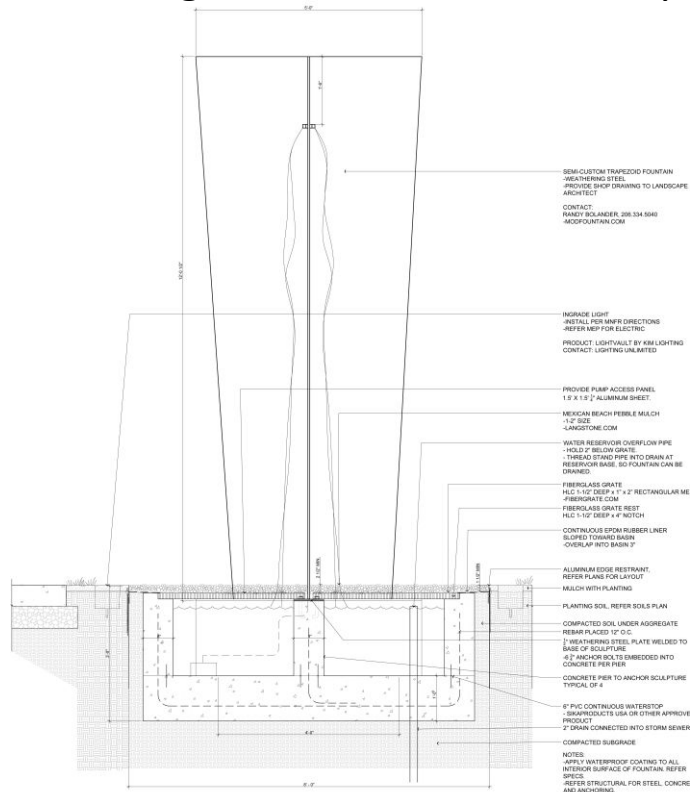
Fountain Tek

<http://fountaintek.com>

Specifications and Installation information Underground Water Basins

<https://www.aquascapeinc.com/professionals>

Custom In ground installation example



1 FOUNTAIN RESERVOIR DETAIL

Pre-Fab In-ground Water Basin

AQUASCAPE INC.
901 AQUALAND WAY
ST. CHARLES, IL 60174
TOLL FREE: 1-877-766-3489
PHONE: (630) 659-2000
FAX: (630) 659-2100
www.aquascapeinc.com

PLAN VIEW
AQUABASIN LARGE
MODEL: #98134
WEIGHT: 46.5 LBS

PERSPECTIVE VIEW
SURFACE AREA: 796.3 SQUARE INCHES
VOLUME: 2272.2 CUBIC INCHES

FRONT VIEW

SIDE VIEW

NOTES:
1. INSTALLATION TO BE COMPLETED IN ACCORDANCE WITH MANUFACTURER'S SPECIFICATIONS.
2. DO NOT SCALE DRAWING.
3. THIS DRAWING IS INTENDED FOR USE BY ARCHITECTS, ENGINEERS, CONTRACTORS, CONSULTANTS AND DESIGN PROFESSIONALS FOR PLANNING PURPOSES ONLY. THIS DRAWING MAY NOT BE USED FOR CONSTRUCTION.
4. ALL INFORMATION CONTAINED HEREIN WAS CURRENT AT THE TIME OF DEVELOPMENT BUT MUST BE REVIEWED AND APPROVED BY THE PRODUCT MANUFACTURER TO BE CONSIDERED ACCURATE.
5. CONTRACTOR'S NOTE: FOR PRODUCT AND COMPANY INFORMATION VISIT www.CADdetails.com/info AND ENTER REFERENCE NUMBER 037-123

AQUASCAPE AQUABASIN
AQUASCAPE AQUABASIN: 45

037-123
PROTECTED BY COPYRIGHT ©2018 CADDETAILS.COM LTD.

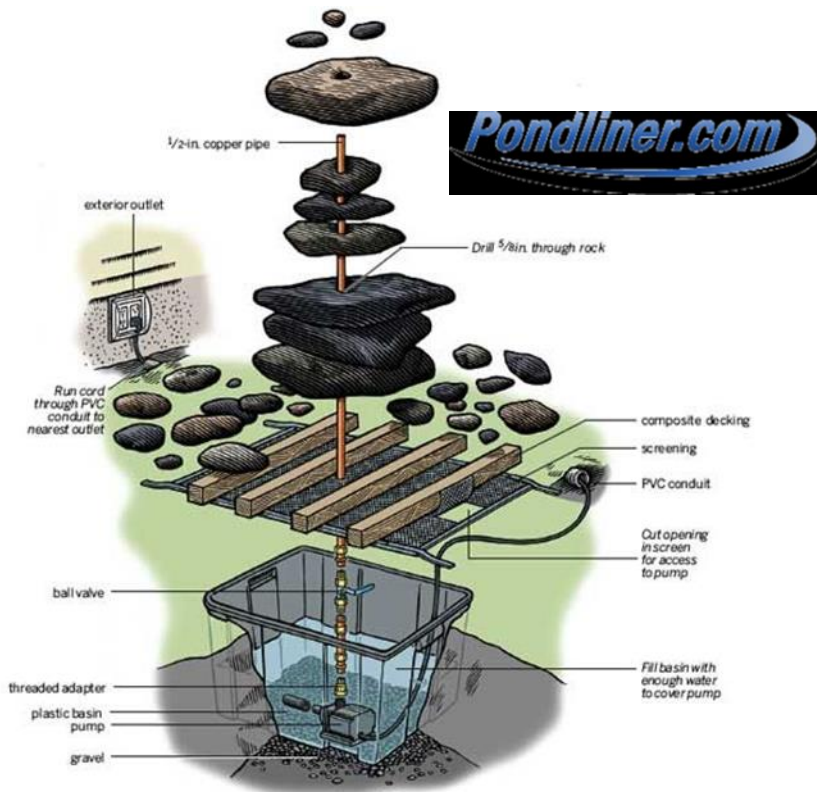
REVISION DATE: 28/11/2018
CADdetails.com

Specifications and Installation information Underground Water Basins and maintenance

<https://www.pondliner.com/pond-construction>

<https://www.pondliner.com/atlantic-ecosolv-liquid-pond-cleaner>

<https://www.atlanticwatergardens.com/products/product/163>



Fountain Maintenance

Corten steel is designed to rust and requires a period of time before the patina sets.

Corten steel being a permeable material can be coated with a commonly used clear sealer to improve water resistance, extending the life of the sculpture.

All stainless steel Modfountains are finished by electro-polishing which creates “good bright finish” 35 times more resistant to corrosion than hand polishing. See Stainless Steel care instructions on MODFOUNTAIN.com

Pond Maintenance

Avoid using salt based water treatment chemicals as it can accelerate rusting. We recommend EcoSolv liquid pond cleaner.

Specifications and Installation information

Pump Box

The MODFOUNTAIN Pump Box is a galvanized or stainless steel platform.

Designed to conceal the submersible pump and can be used as a stand alone platform or bolted into a concrete pool.

Designed to be used with The Wave, Y series and X series Modfountains.

