

Zen X2 Fountain

Product Description:

The X2 is an enclosed X configuration which creates water tension. The X2 fountain produces periodic splashing as the central rectangular tube fills and the water pools and flows off the top of the fountain, creating a lively interactive water feature. Shown in Corten steel. Also available in Stainless steel, Powder coat custom colors and a variety of sizes.

Low splash radius with a soothing waterfall sound makes the X2 ideal for creating white noise in exterior or interior spaces. Adjustable water flow to control splash radius and surface water tension.



Materials

Available in:

- Corten 3/16" architectural rusting steel
- Stainless steel 304
- Powder coated mild steel
- Weight: 285 lbs.
- Corten, Powder coated or Stainless steel rectangular tube
- Dimensions: 24"x24"x92"H
- Every Fountain can be scaled up or down. Pricing quoted on the website is for dimensions as shown. Contact us for pricing on custom sizes.

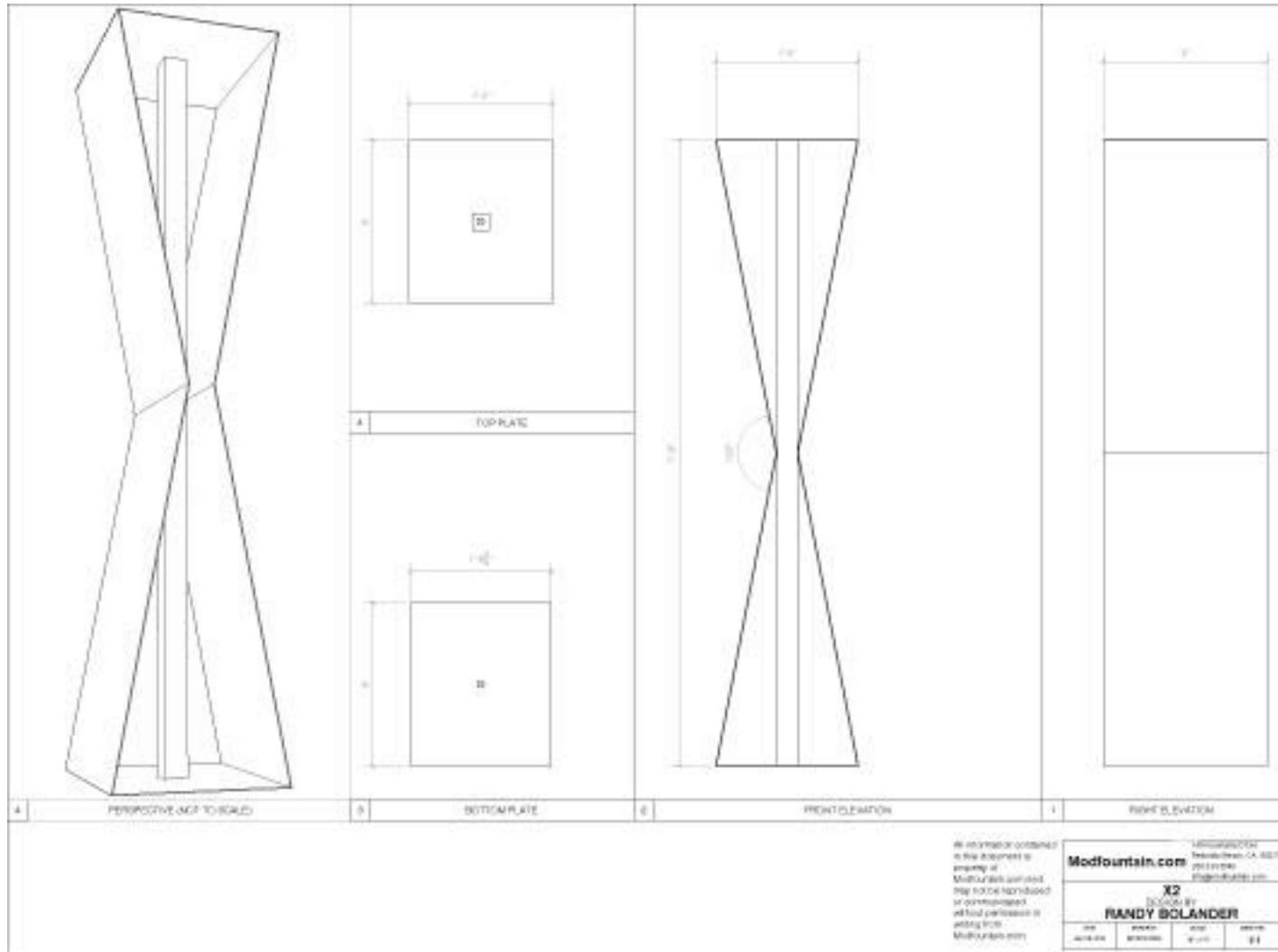
Purchase Includes:

- 2500 gph submersible pump
- 25ft. power cord
- PVC fittings for water intake and pump connections
- Fully assembled and crated Fountain

Does not include:

- Pond or underground reservoir - See Specifications/Installation page for suppliers and installation information
- Pump box platform available at additional charge from MODFOUNTAIN.com
- Shipping - additional cost (call or email for exact cost)





All information contained
in this document is
property of
Modfourtsin.com and
may not be distributed
or communicated
in any form without
written consent.
Modfourtsin.com

1405545230264
Telus/Orion, CA, 94577
916.434.9995
info@modfourtsin.com

Modfourtsin.com

X2
DESIGNED BY
RANDY BCLANDER

DATE	VERSION	APP.	APPROV.
10/20/24	01/0001	0001	RB

CAD Drawings available



X Series Fountains Now Available in Powder Coat Colors



RAL 5018 Turquoise	RAL 1023 Yellow	RAL 3002 Red	RAL 2009 Orange
-----------------------	--------------------	-----------------	--------------------

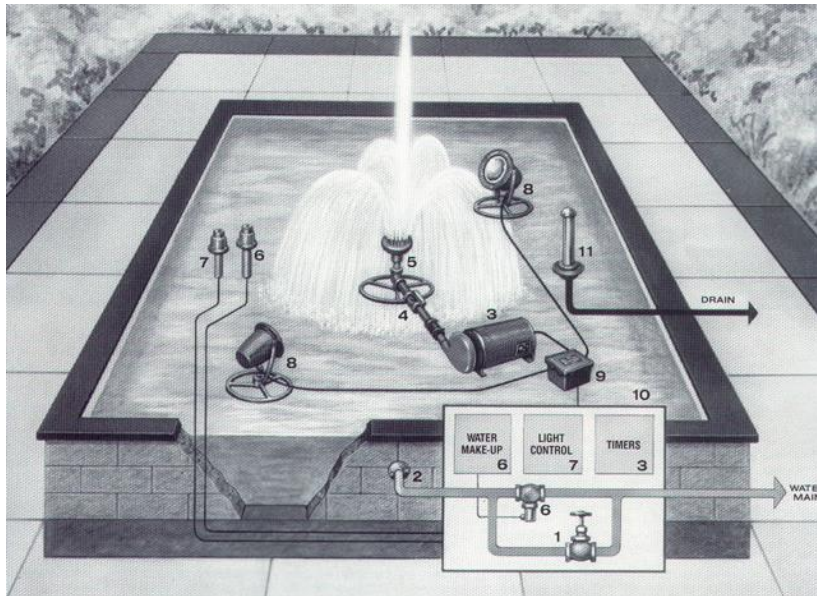
Powder Coating is the application of organic powder by electrostatic attraction to metal. Once cured by heat the finish is a smooth, hard skin. All processes are factory applied under controlled, stable conditions. All fountains will have double thickness of powder coating and UV coating to protect from fading.

Reasons to Powder Coat:

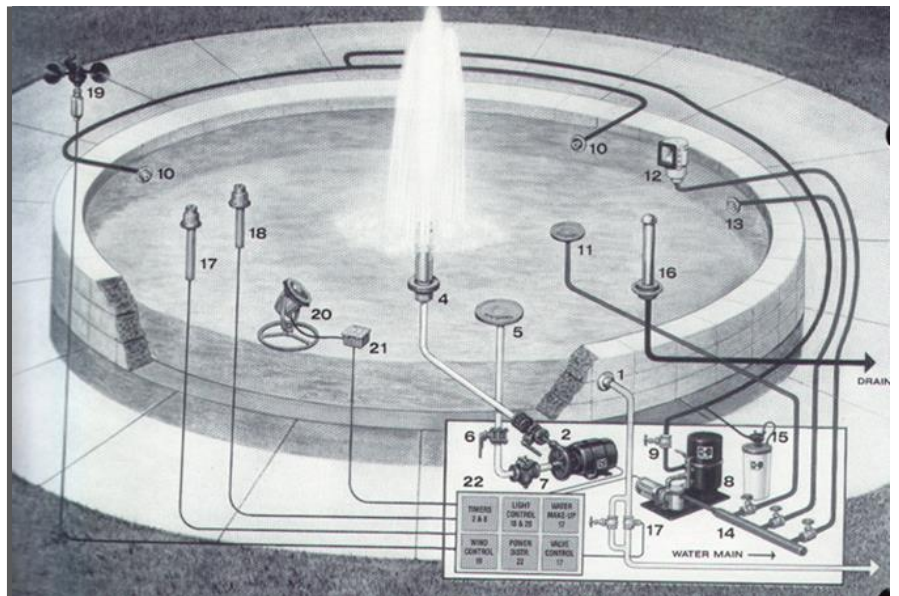
- **Affordable** – See Product pages for actual pricing.
- **Custom colors** – a wide variety of colors and finishes are available: <https://www.tiger-coatings.us/downloads>
- **Impact resistance and durability of powder** - Powder is not bullet-proof but it is more durable than its liquid counterpart. **Environmental** – There are many environmental advantages of powder coating as well. Since there are no solvents or VOCs there is no damage to the environment during application. The waste is also not hazardous and can be disposed in the landfill.

Specifications and Installation information

Examples of above ground concrete pools



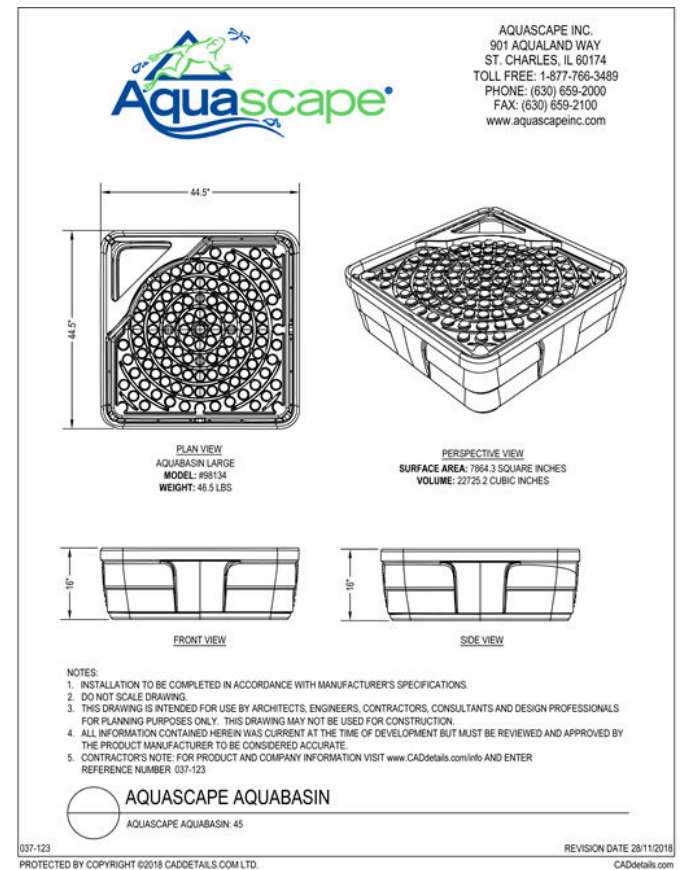
Minimum dimensions for above ground pool 48"x48"x12"



<http://fountaintek.com>

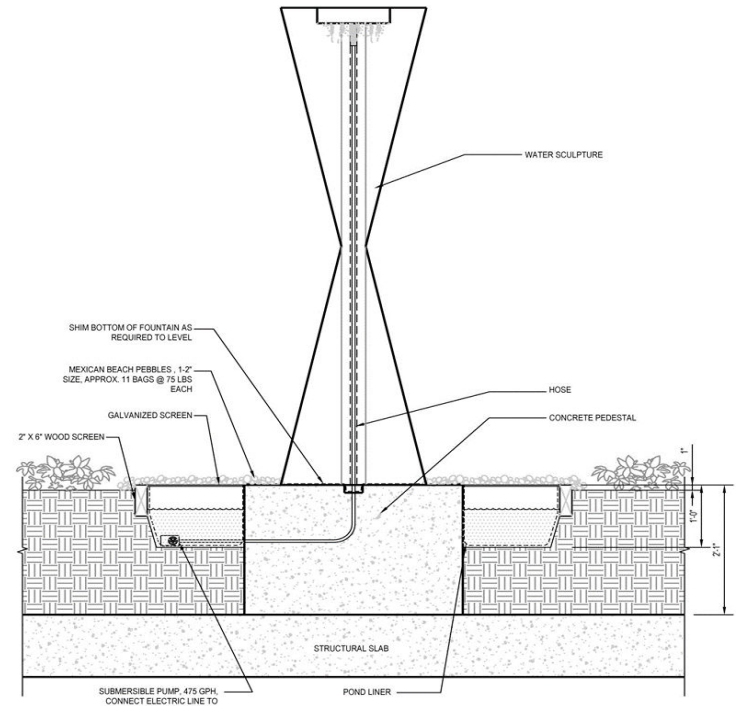
Specifications and Installation information Underground Water Basins

<https://www.aquascapeinc.com/professionals>



Specifications and Installation information Underground Water Basins

Custom In-ground installation
Cement pedestal and underground basin



NOTES:

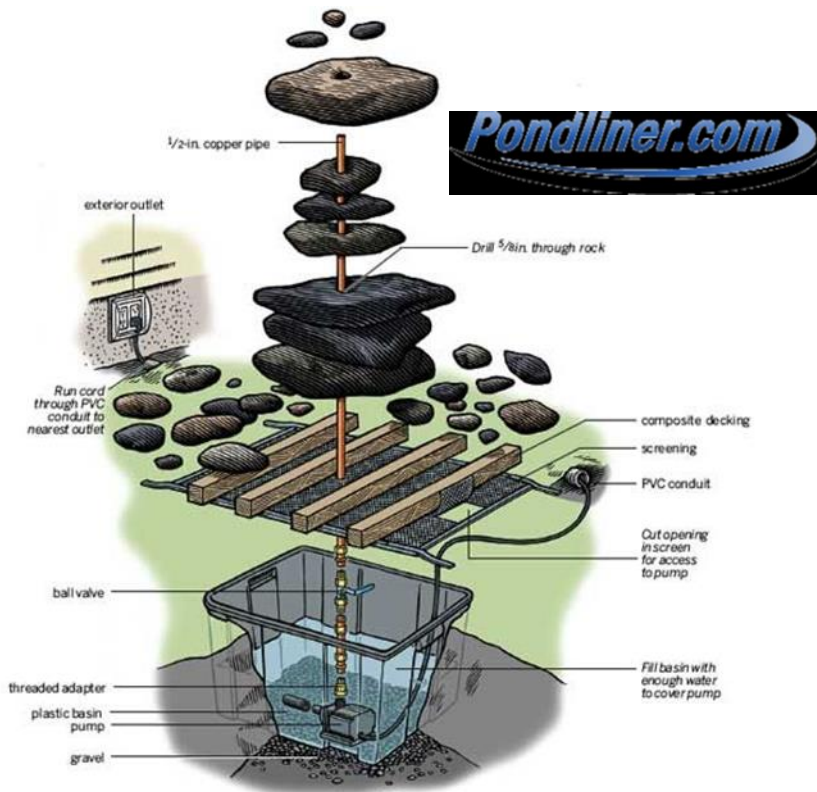
1. REMOTE SWITCH INSTALLED IN PLANTER AREA. LOCATION TO BE APPROVED BY LANDSCAPE ARCHITECT.
2. CONTRACTOR TO PROVIDE AUTOMATIC WATER FILL IN FOUNTAIN BASIN. WATER SOURCE MAY BE PROVIDED VIA IRRIGATION SYSTEM.

Specifications and Installation information Underground Water Basins and maintenance

<https://www.pondliner.com/pond-construction>

<https://www.pondliner.com/atlantic-ecosolv-liquid-pond-cleaner>

<https://www.atlanticwatergardens.com/products/product/163>



Fountain Maintenance

Corten steel is designed to rust and requires a period of time before the patina sets.

Corten steel being a permeable material can be coated with a commonly used clear sealer to improve water resistance, extending the life of the sculpture.

All stainless steel Modfountains are finished by electro-polishing which creates “good bright finish” 35 times more resistant to corrosion than hand polishing. See Stainless Steel care instructions on MODFOUNTAIN.com

Pond Maintenance

Avoid using salt based water treatment chemicals as it can accelerate rusting. We recommend EcoSolv liquid pond cleaner.

Specifications and Installation information

Pump Box

The MODFOUNTAIN Pump Box is a galvanized or stainless steel platform.

Designed to conceal the submersible pump and can be used as a stand alone platform or bolted into a concrete pool.

Designed to be used with The Wave, Y series and X series Modfountains.

